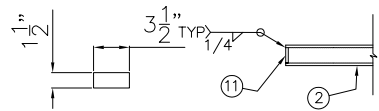
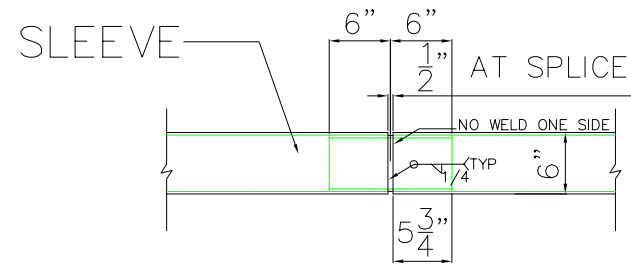


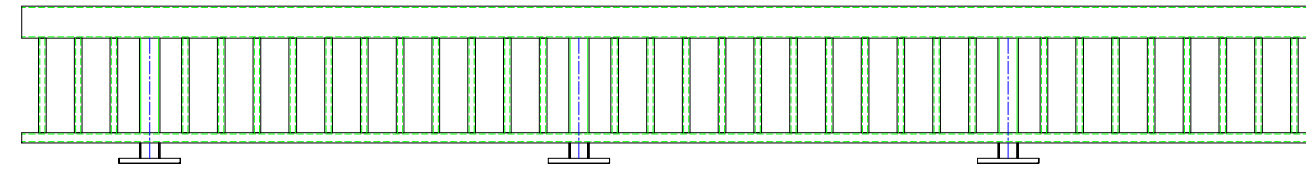
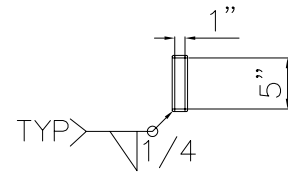
⑩ TOP RAIL END CAP



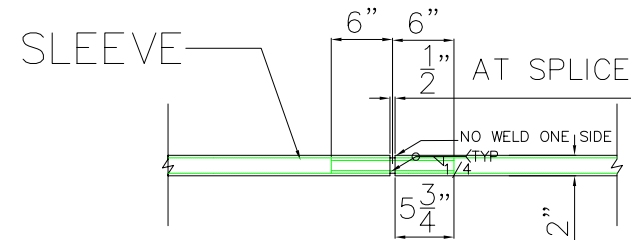
⑪ BOTTOM RAIL END CAP



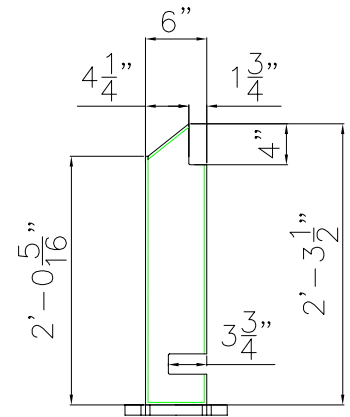
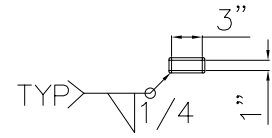
⑫ TOP RAIL SPLICE DETAIL  
5 1/2" X 1 1/2" STEEL RECT. TUBE



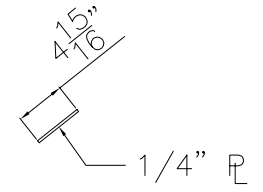
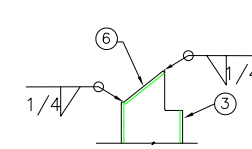
TYPICAL RAIL PANEL



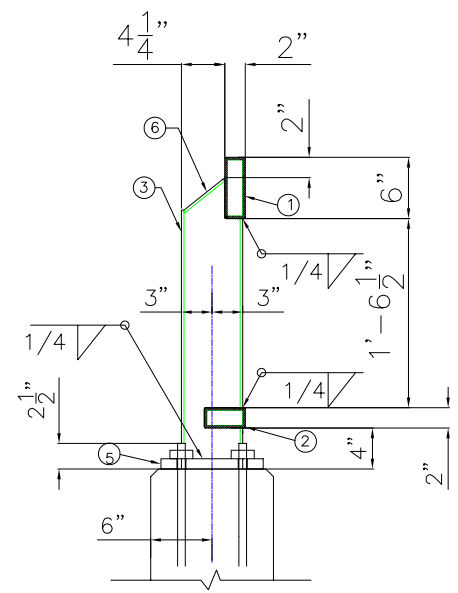
⑬ BOTTOM RAIL SPLICE DETAIL  
3 1/2" X 1 1/2" STEEL RECT TUBE



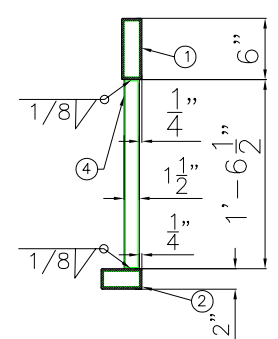
③ RAIL POST DETAIL  
6" x 4" x 1/4"



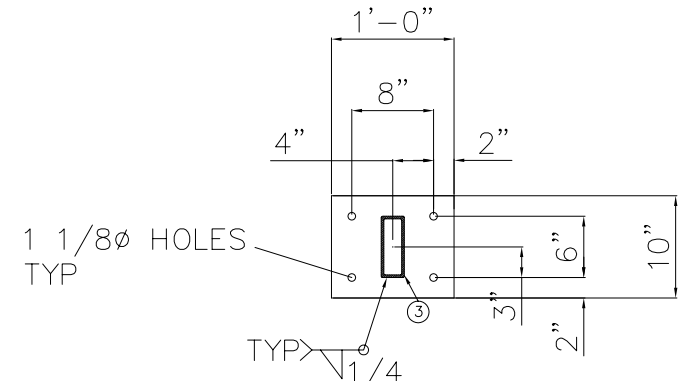
⑥ POST CAP  
4 15/16" X 3 1/2" X 1/4"



SECTION AT POST



SECTION AT PICKET



⑤ BASE PLATE DETAIL  
10" X 12" X 1"



⑦⑧⑨ EXPANSION BOLT,  
NUT, WASHER

BILLING LENGTH = 276.5 LF BICYCLE RAIL

<b>G.S.I. HIGHWAY PRODUCTS</b>		
720 W. WINTERGREEN RD., HUTCHINS, TEXAS 75141 (972) 225-1660		
CONTRACTOR:		
SCALE: NONE	GSI#:	DATE: 10/14/04
REVISED:	CHECKED:	DRAWN: DUGAN
2'-6" BICYCLE RAIL		FABRICATION
		1 / 1