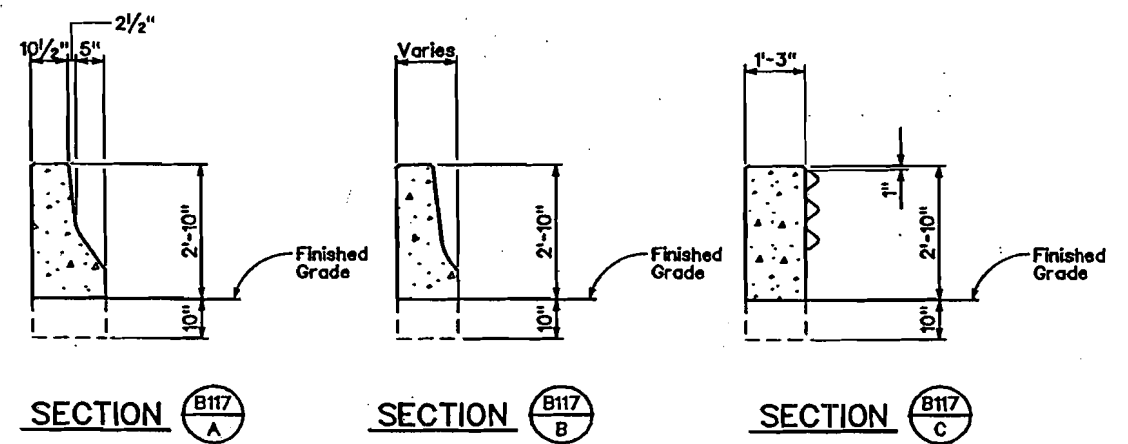
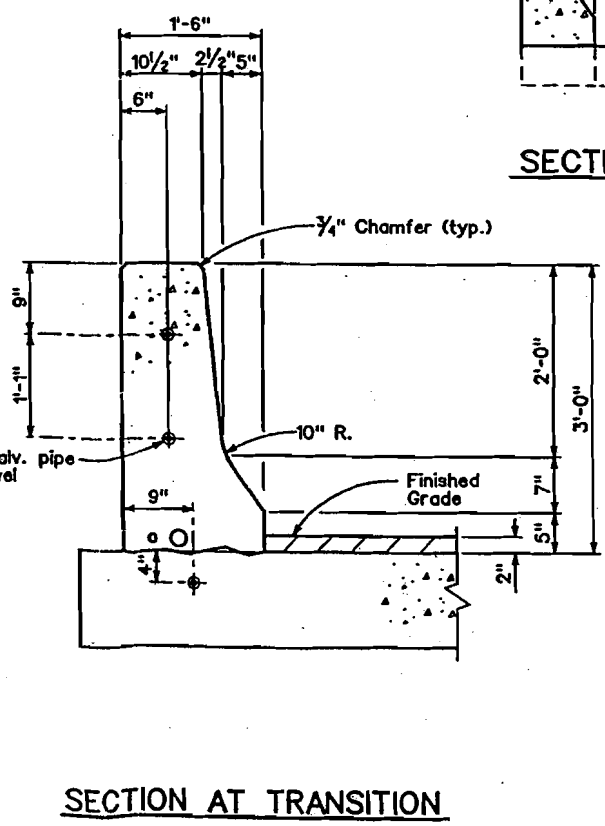
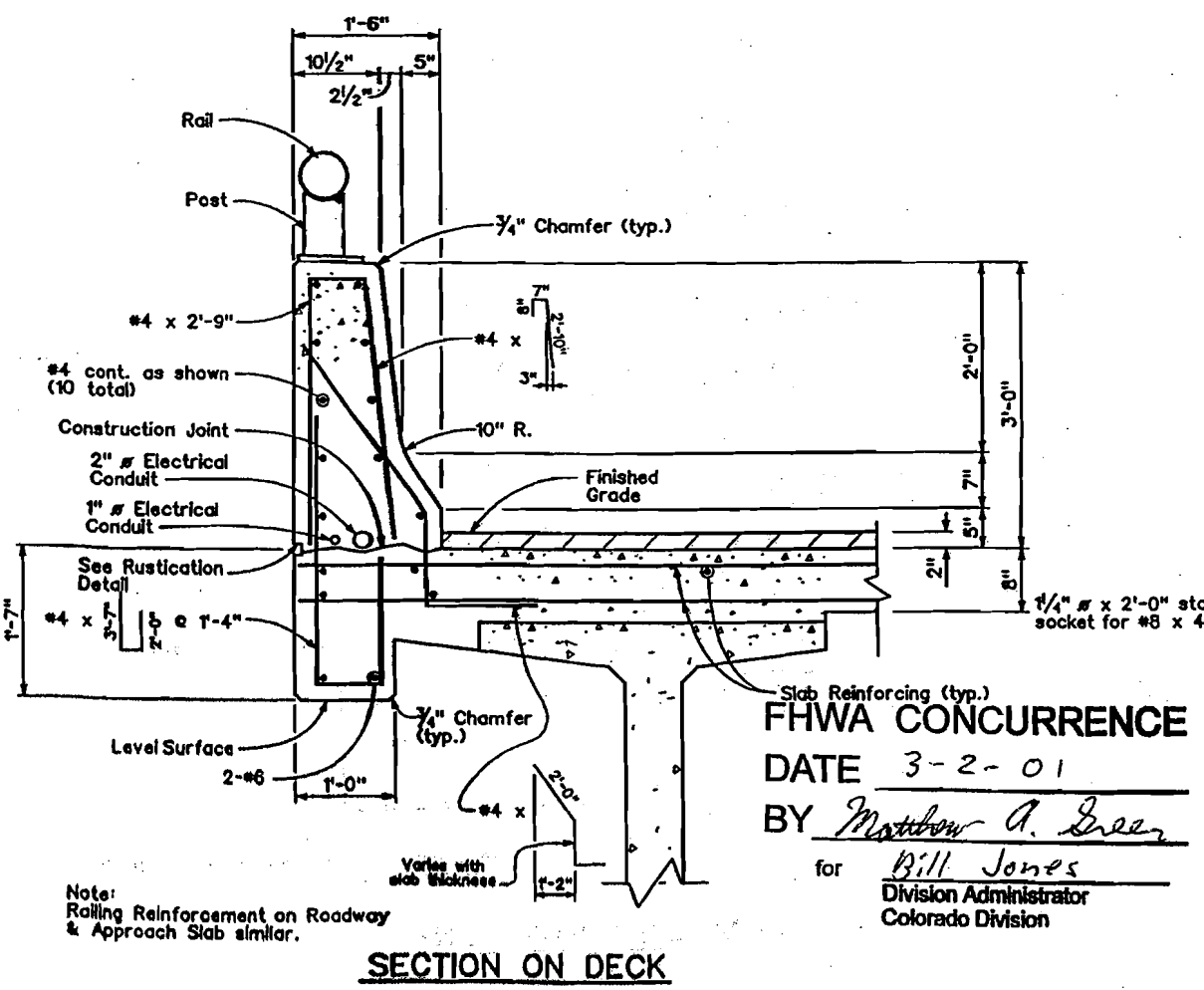
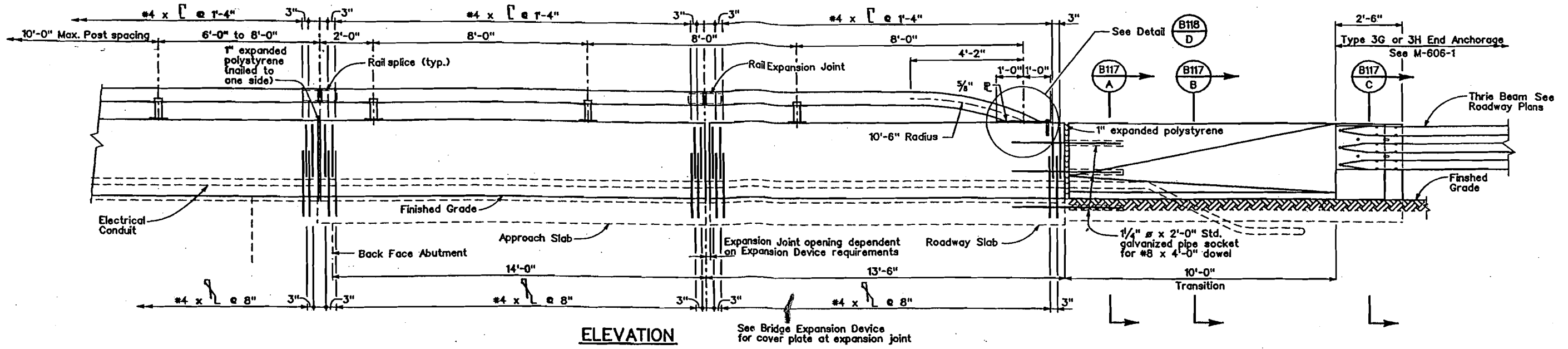


PLOT DATE: 02/05/01

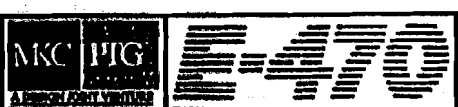


- NOTES:**
1. Round tubing shall be shop bent or fabricated to fit horizontal curves of less than 2,400' radius.
 2. Tubing shall be continuous over two (2) posts only.
 3. Round and rectangular tubing shall be manufactured in accordance with the requirements of ASTM A500 Grade B (Fy=46 ksi).
 4. All other structural steel shall be AASHTO M-270 Grade 50W (ASTM A709 Grade 50W).
 5. All reinforcing steel shall be epoxy coated.
 6. All concrete shall be Class DR (Bridge.)
 7. D.A.S. = Deformed anchor stud, minimum Grade 60 material, automatically end welded.
 8. All bolts shall be tightened to snug tight only.
 9. Longitudinal Reinforcement shall stop at all expansion joints.
 10. All Galvanized Pipe Sockets shall be ASTM A53 Grade A Schedule 40 or better and shall be galvanized.

FHWA CONCURRENCE
 DATE 3-2-01
 BY Matthew A. Green
 for Bill Jones
 Division Administrator
 Colorado Division

DESIGNED BY: EIS
 DRAFTED BY: SEH
 CHECKED BY: MAJ

ISSUE RECORD	
NO.	PURPOSE
1	Release for Construction



SABLE BLVD. OVER E-470
 BRIDGE RAIL TYPE 7 (SPECIAL) (1)
 B1-3 - STA. 2005+00 TO 2090+00

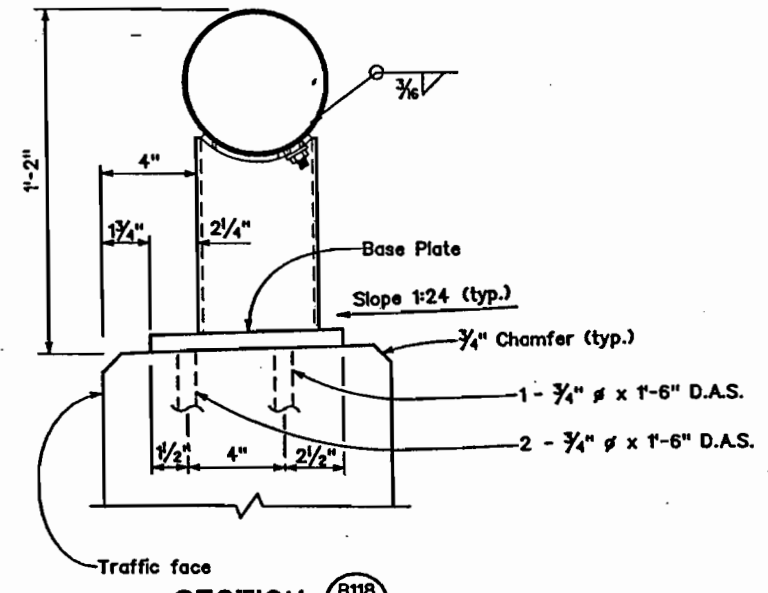
PARSONS TRANSPORTATION GROUP
 STRUCTURE NUMBER: 36.27

PACKAGE NUMBER: B1-3
 SHEET NUMBER: B117
 CONTRACT NO. 99B401

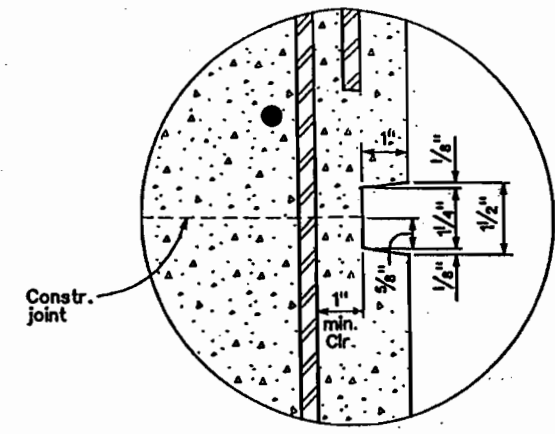


TTD 010103 FILE NAME: y:\24708r\969\cadd\247078\40\40b-71.dgn

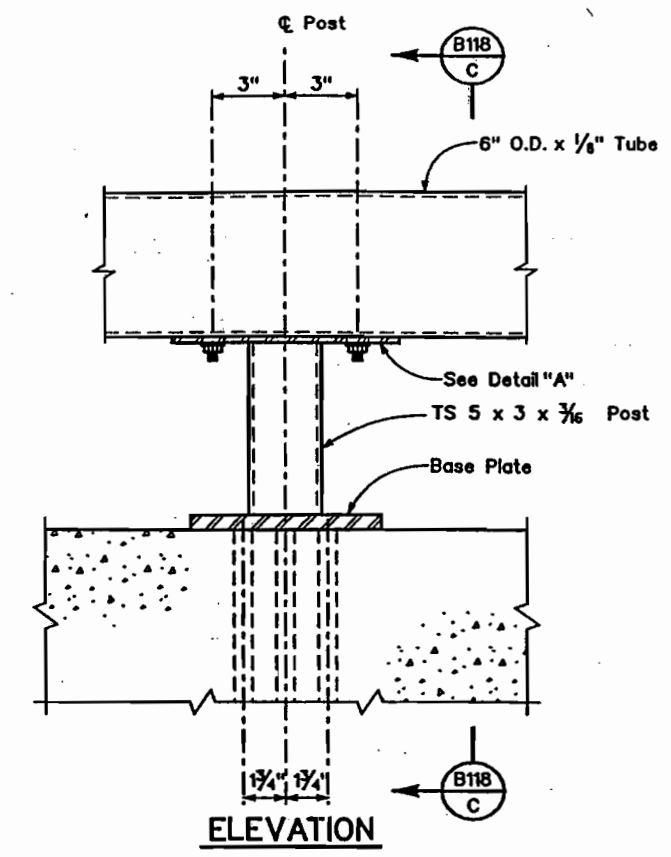
PLOT DATE: 01



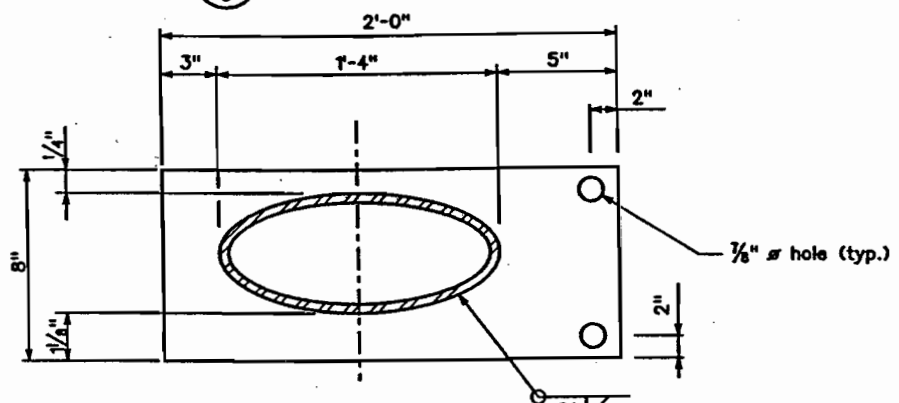
SECTION B118 C



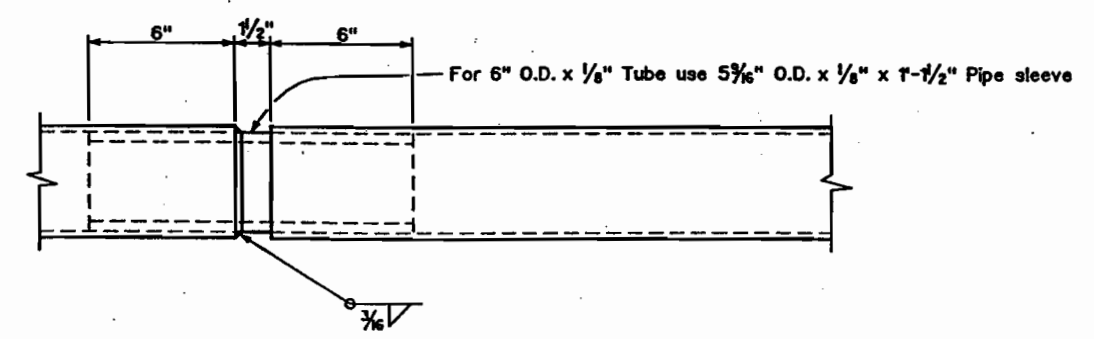
RUSTICATION DETAIL



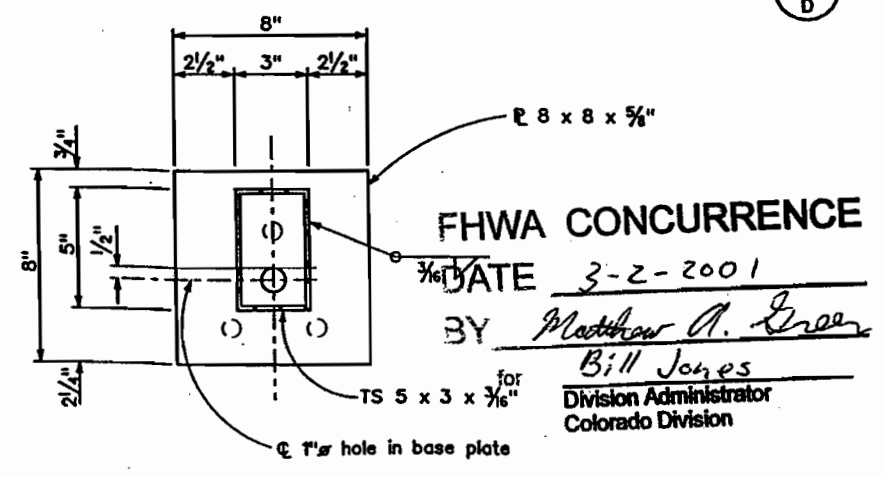
ELEVATION B118 C



DETAIL B117 D

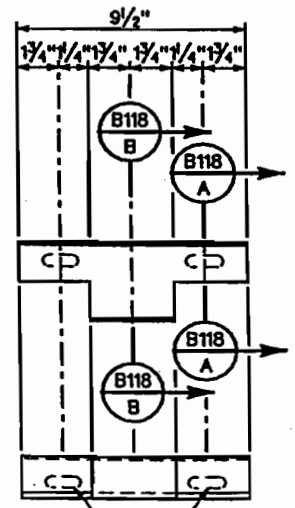


RAIL SPLICE

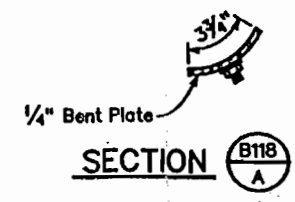


BASE PLATE DETAIL

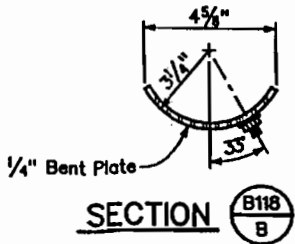
FHWA CONCURRENCE
 DATE 3-2-2001
 BY Matthew A. Green
 Bill Jones
 Division Administrator
 Colorado Division



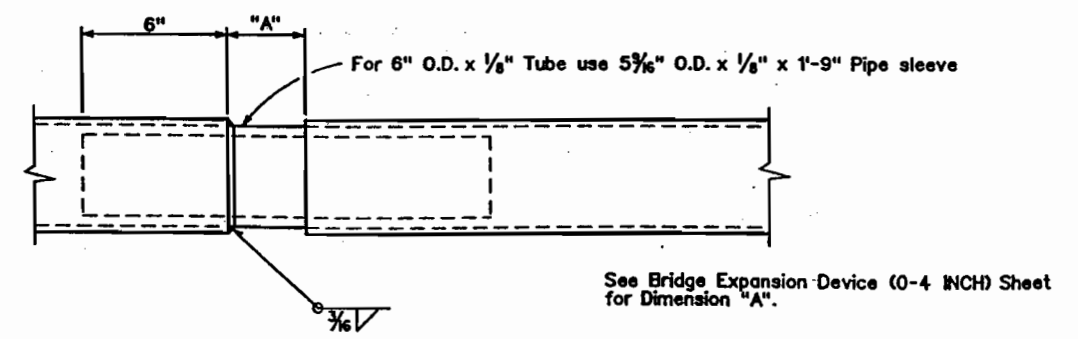
DETAIL A
ASTM A709 Grade 36



SECTION B118 A



SECTION B118 B



RAIL EXPANSION JOINT

See Bridge Expansion Device (0-4 INCH) Sheet for Dimension "A".

FILE NAME: y:\2470br\p3\csdd\247018\40\NE40BR72.dgn

DESIGNED BY: EIS	ISSUE RECORD		MKS PTC	470
DRAFTED BY: SEH	NO. 1	PURPOSE Release for Construction		
CHECKED BY: MAJ				

SABLE BLVD. OVER E-470
 BRIDGE RAIL TYPE 7 (SPECIAL) (2)
 B1-3 - STA. 2005+00 TO 2090+00

PARSONS TRANSPORTATION GROUP
 STRUCTURE NUMBER: 36.27

PACKAGE NUMBER B1-3
 SHEET NUMBER B118
 CONTRACT NO. 998401

