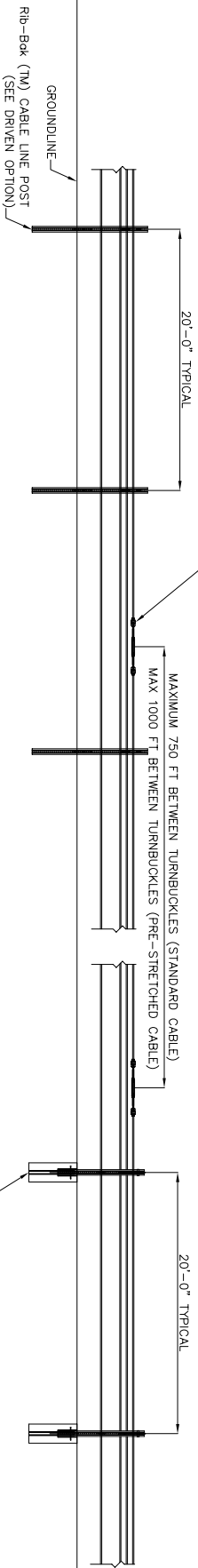


PLAN VIEW

STAGGER PLACEMENT OF TURNBUCKLES LINE TO LINE BETWEEN POSTS
NOTE: TURNBUCKLES MAY BE SWAGED OR WEDGED FITTING



ELEVATION

Rib-Bak™ (TM) CABLE LINE POST (SOCKETED OPTION) 30\"/>

GENERAL NOTES

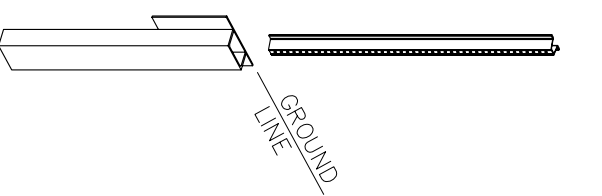
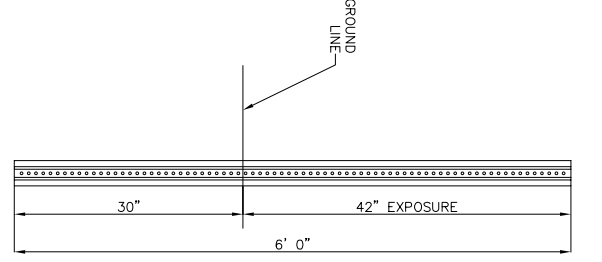
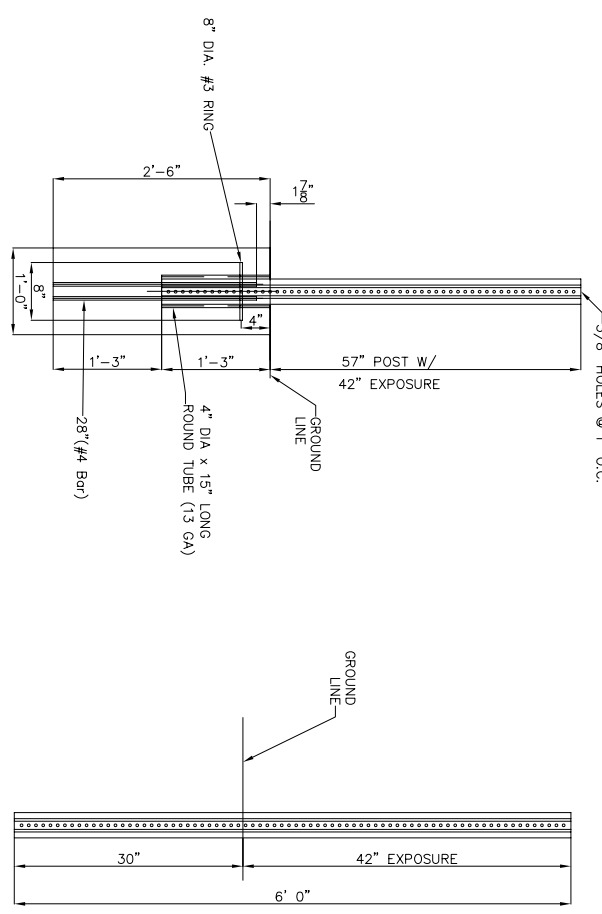
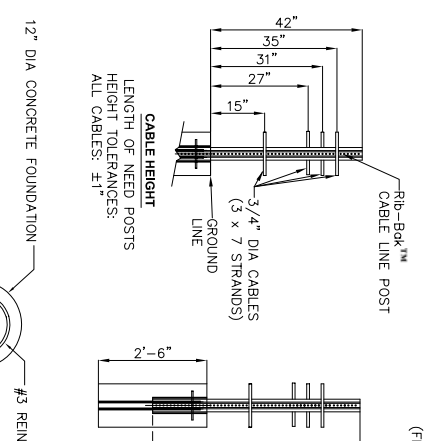
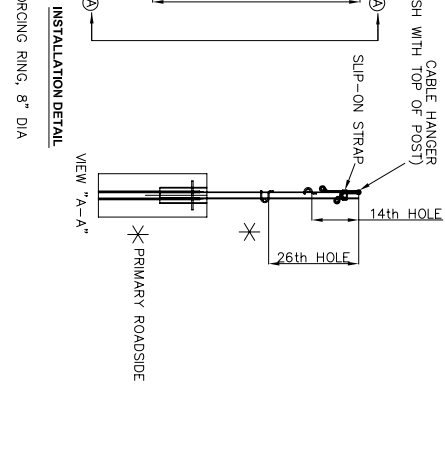
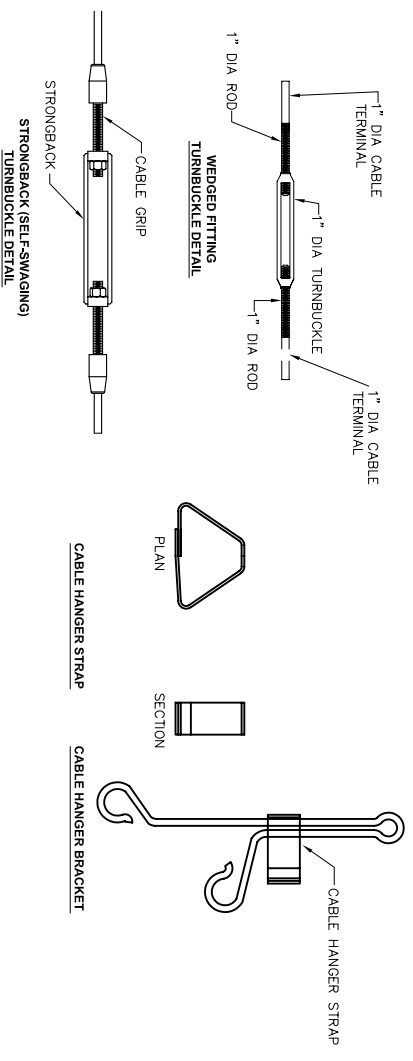
1. For additional information, contact your distributor or Nucor Steel Marion, Inc. at (603) 430-9350.
2. For payment see special specification "Cable Barrier System".
3. For additional information see the manufacturer's product manual.
4. The NU-CABLE System is designed for bi-directional traffic flows. See the manufacturer's product manual for placement adjacent to guardrail end treatments.
5. The NU-CABLE System shall be installed on shoulders or medians with slopes of 6:1 or flatter without obstructions, depressions, etc. that may significantly affect the stability of an errant vehicle.
6. The NU CABLE System may be installed on either side of the roadway. Rib-Bak™ Cable Line Posts may be socketed or driven design. The TL-4 system uses a 4#/LF post exclusively.
7. All foundation designs are based on NCHRP 350 strong (S1) soil. Consult the manufacturer for specific foundation designs if soil types differ.
8. See Table #1 for tension amount at specific cable temperature for initial installation.
9. See Table #2 for tension amount at specific cable temperature for maintenance.
10. Socket may be round or rectangular.
11. Consult your project plan sheets and cable barrier specifications for desired socket material.

ⓐ TABLE 1

CABLE TENSION CHART	
INITIAL INSTALL	MAINTENANCE
F	LBF
120	4624
110	4986
100	5350
90	5713
80	6077
70	6440
60	7167
50	7894
40	8619
30	9346
20	10073
10	10800
0	11525
-10	12252
-20	12979
-30	13706

ⓑ TABLE 2

CABLE TENSION CHART	
F	LBF
120	4021
110	4336
100	4652
90	4968
80	5284
70	5600
60	6232
50	6864
40	7495
30	8127
20	8759
10	9391
0	10022
-10	10654
-20	11286
-30	11918



NU-CABLE TL-4 CABLE SYSTEM

SHEET 1 OF 2 DWG DATE: 10/05/2009

FILE:	DN:	CK:	DW:	CK:
DISTRICT	FEDERAL AID PROJECT	SHEET		
COUNTY	CONTROL	SECT	JOB	HIGHWAY

SOCKETED POST OPTION (TYPE S POST) ⓐ

DRIVEN POST OPTION (TYPE D POST)

DRIVEN SOCKET OPTION (TYPE S POST)