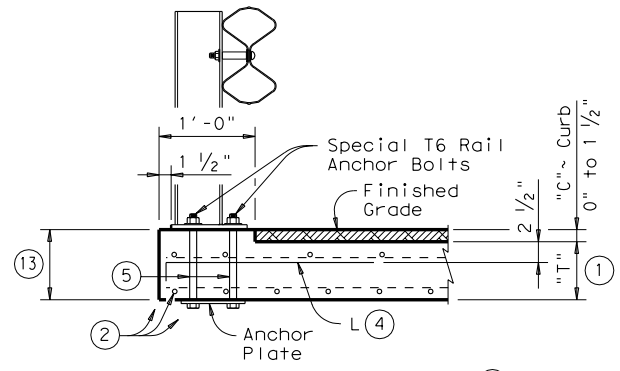


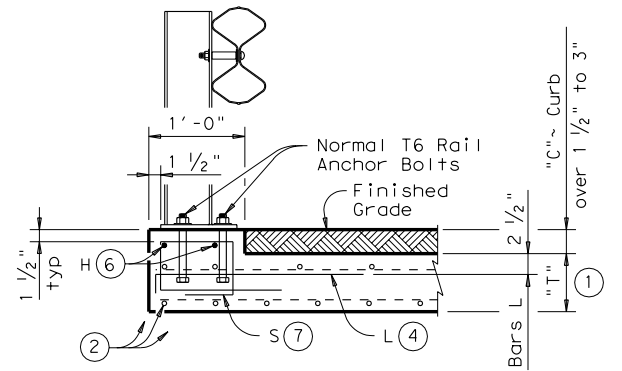
DISCLAIMER: The use of this standard is governed by the "Texas Engineering Practice Act". No warranty of any kind is made by TxDOT for any purpose whatsoever. TxDOT assumes no responsibility for the conversion of this standard to other formats or for incorrect results or damages resulting from its use.

LEVELS DISPLAYED	ACC:
1	



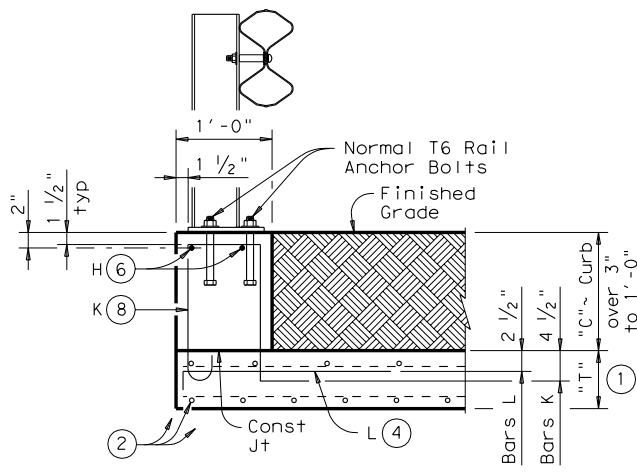
SECTION - TYPE 1 (3)

Used for curbs 0" to 1 1/2"
(Showing "C" = 1 1/2")



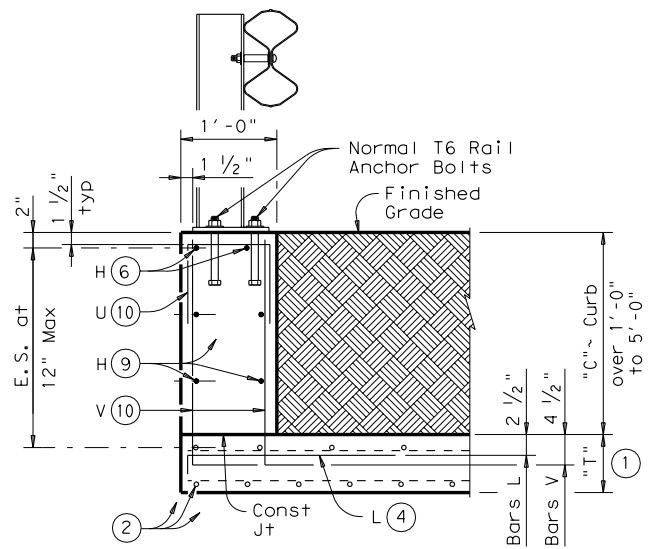
SECTION - TYPE 2

Used for curbs over 1 1/2" to 3"
(Showing "C" = 3")



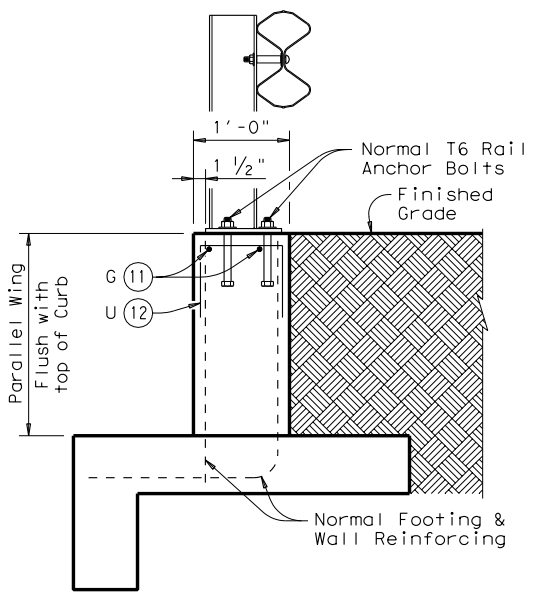
SECTION - TYPE 3

Used for curbs over 3" to 1'-0"
(Showing "C" = 1'-0")



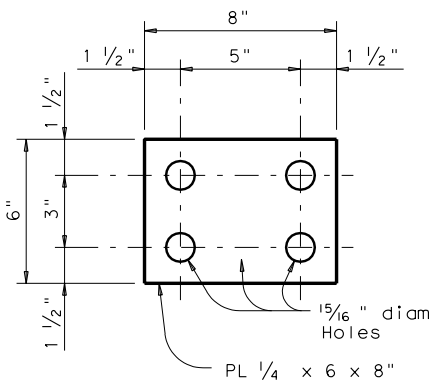
SECTION - TYPE 4

Used for Curbs over 1'-0" to 5'-0"
(Showing "C" = 2'-0")



TYPICAL SECTION THRU PARALLEL WINGWALL

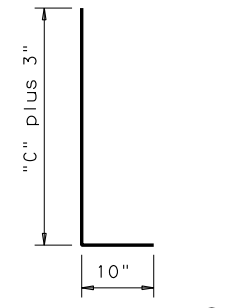
Use with all curb heights shown



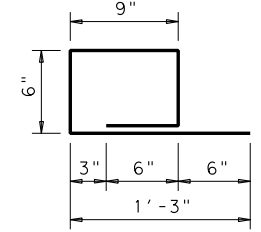
NOTE: Place anchor bolts thru holes and tack weld in place.

ANCHOR PLATE DETAILS

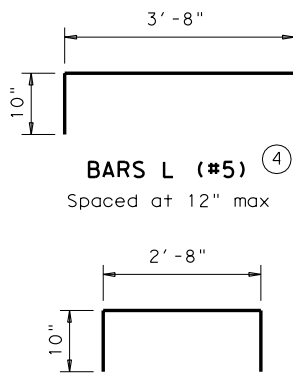
Used at TYPE 1 mountings



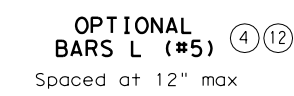
BARS V (#5) (10)
Spaced at 12" max



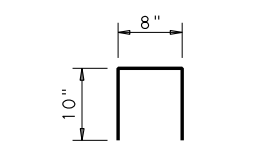
BARS S (#4) (7)
Spaced at 12" max



BARS L (#5) (4)
Spaced at 12" max



OPTIONAL BARS L (#5) (4) (12)
Spaced at 12" max



BARS U (#4) (10)
Spaced at 12" max

- (1) "T" is equal to the culvert top slab thickness. For Precast Boxes with slabs less than 7", see SCP-MD Standard for additional details.
- (2) Normal culvert slab bars adjusted as necessary to clear obstructions.
- (3) Omit normal culvert curb bars K and H.
- (4) Place bars L as shown. Tilt hook as necessary to maintain cover.
- (5) 4 ~ 1 1/2" diam formed holes for 7/8" diam anchor bolts at each rail post.
- (6) Place normal culvert curb bars H (#4) as shown. Adjust as necessary to clear obstructions.
- (7) Omit normal culvert curb bars K. Place bars S as shown. Tilt bars S as necessary to maintain cover.
- (8) Place normal culvert curb bars K spaced at 12" max as shown. Tilt bars K as necessary to maintain cover. Refer to box culvert details sheets for bars K details.
- (9) Additional bars H (#4) as required to maintain 12" max spa.
- (10) At TYPE 4 mountings, replace normal culvert curb bars K with one bar U and two bars V as shown spaced at 12" max. Adjust length of bars V as necessary to maintain clear cover.
- (11) Adjust parallel wing bars G to positions shown.
- (12) Optional bars L are to be used only for precast box culverts with 3'-0" closure pour.
- (13) If "T" plus "C" is greater than 8", provide reinforcement per TYPE 1 mounting and anchor bolts per TYPE 2 mounting.
- (14) Quantities shown are for contractor's information only. Quantities are per linear foot of curb length. The values for each section type in table can be interpolated for intermediate values of curb height, "C". Quantity includes bars K (when applicable).

Curb Height "C"	Section Type	Conc (CY/LF)	Reinf Steel (Lb/LF)
1 1/2"	1	0.005	4.7
3"	2	0.009	8.4
6"	3	0.019	8.9
1'-0"	3	0.037	8.9
1'-6"	4	0.056	14.3
2'-0"	4	0.074	15.4
2'-6"	4	0.093	17.7
3'-0"	4	0.111	18.8
3'-6"	4	0.130	21.2
4'-0"	4	0.148	22.2
4'-6"	4	0.167	24.6
5'-0"	4	0.185	25.6

GENERAL NOTES:

The T6 rail was evaluated based on the results of previous crash tests and approved for a NCHRP Report 350 TL-2 rating. The T6 rail is only approved for low speed use, design speeds of 45 mph and less.
See standard Type T6 for railing, post and anchor bolt details. These box culvert mounting details are not suitable for mounting other rail types.
All reinforcing shall be Grade 60. Adjust reinforcing as necessary to provide 1/4" cover.
All concrete shall be of the same Class and strength as the box culvert top slab.
The Curb shall be considered as part of the Box Culvert for payment.
For vehicle safety, the top of the curb shall be flush with the finished grade.

SPECIAL NOTE:

These details are for use with curbs that are 0" to 5'-0" tall only. Curb heights that are greater than those shown will require special design.

The use of the T6 rail is restricted to design speeds of 45 mph or less.



BOX CULVERT MOUNTING DETAILS FOR TYPE T6 RAIL (CURBS 0" TO 5'-0" TALL ONLY)

T6-CM

FILE: r1stde22.dgn	DN: GAF	CK: TxDOT	DW: TxDOT	CK: GAF
© TxDOT March 2002	DISTRICT	FEDERAL AID PROJECT		SHEET
REVISIONS				
COUNTY	CONTROL	SECT	JOB	HIGHWAY