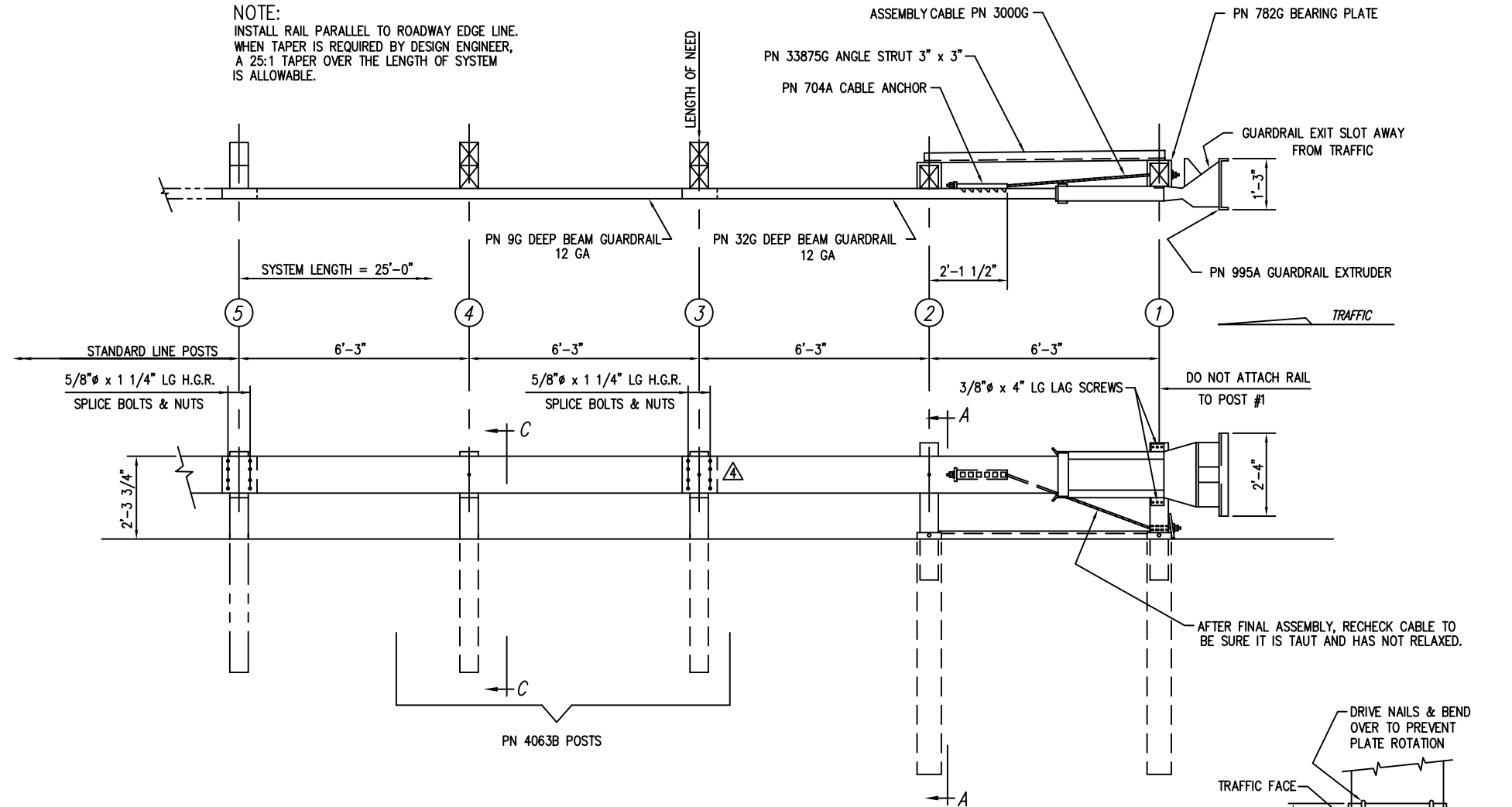
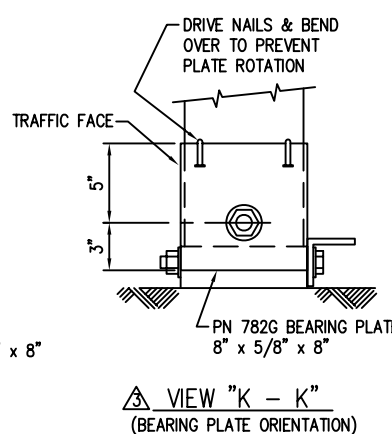
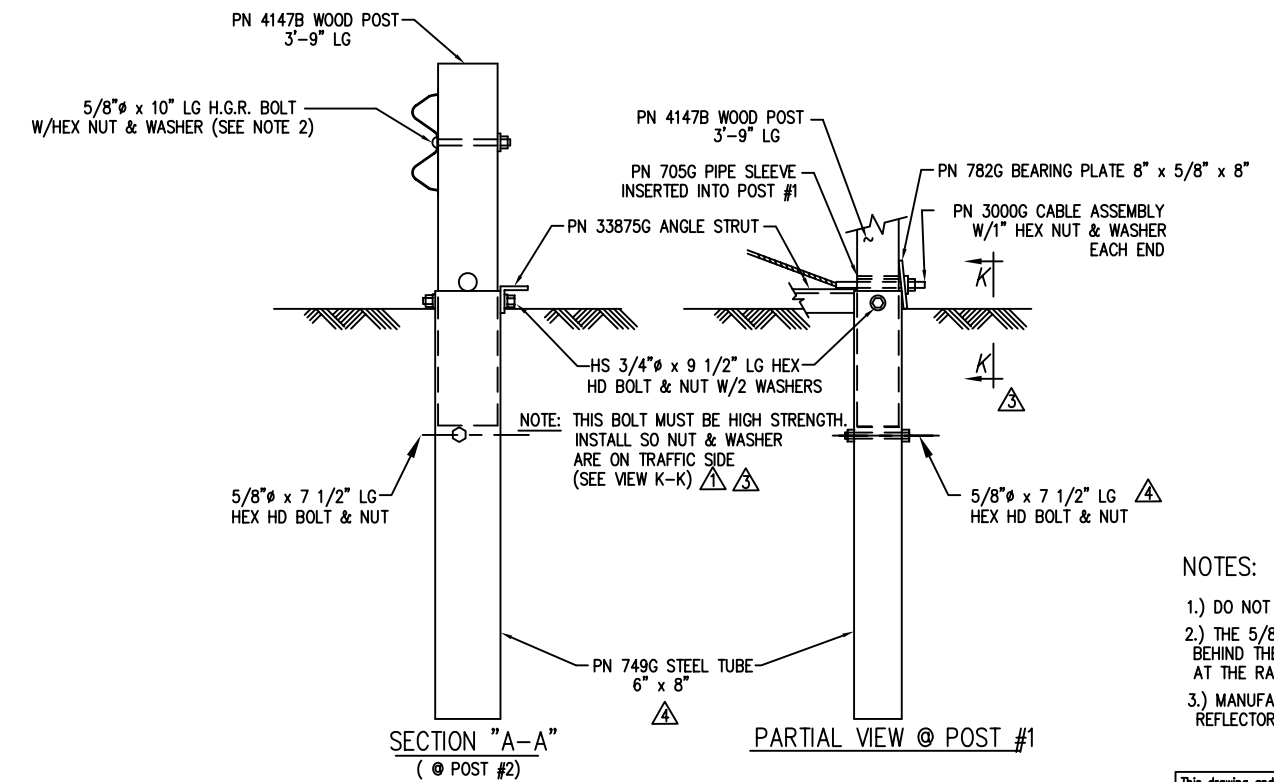
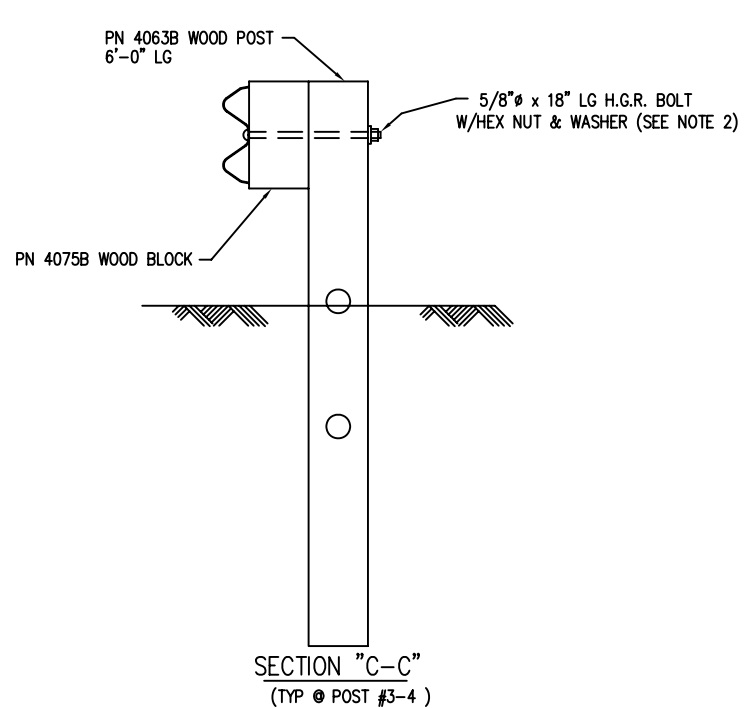


NOTE:
INSTALL RAIL PARALLEL TO ROADWAY EDGE LINE.
WHEN TAPER IS REQUIRED BY DESIGN ENGINEER,
A 25:1 TAPER OVER THE LENGTH OF SYSTEM
IS ALLOWABLE.



BILL OF MATERIAL		
PN	QTY	DESCRIPTION
9G	1	12/12'6/6'3/S (GUARDRAIL)
32G	1	12/12'6/6'3/S ANC (GUARDRAIL)
704A	1	CABLE ANCHOR BRACKET
705G	1	2" x 5 1/2" PIPE
749G	2	6'0 TUBE SLEEVE
782G	1	5/8" x 8" x 8" BEARING PLATE
995A	1	ET-PLUS EXTRUDER
3000G	1	CABLE 3/4 x 6'6
3300G	3	5/8" WASHER
3340G	21	5/8" HEX NUT
3360G	16	5/8" x 1 1/4" SPLICE BOLT
3478G	2	5/8" x 7 1/2" HEX HD BOLT
3500G	1	5/8" x 10" POST BOLT
3580G	2	5/8" x 18" POST BOLT
3700G	4	3/4" WASHER
3704G	2	3/4" HEX NUT
3900G	2	1" WASHER
3910G	2	1" HEX NUT
4063B	2	WD 6'0 POST 6 x 8
4075B	2	WD BLOCK 1'2 x 6 x 8 DR
4147B	2	WD 3'9 POST 5 1/2 x 7 1/2
4228G	2	3/8" x 4" LAG SCREW
5148G	2	3/4" x 9 1/2" HEX HD BOLT
33875G	1	ANGLE STRUT



ET-PLUS, OTHER AVAILABLE OPTIONS:
STEEL HINGED BREAKAWAY (HBA) OR STEEL YIELDING POSTS (SYTP) POSTS AT LOCATIONS 1-2, 1-4
KING BLOCKS (COMPOSITE)
12'-6" OR 25'-0" GUARDRAIL PANELS
6'-0" POST FOUNDATION TUBES WITHOUT SOIL PLATES OR 4'-6" TUBES W/SOIL PLATES (#1 & 2)
2 OR 4 POST FOUNDATION TUBES (SOIL PLATES OPTIONAL ON POSTS #3 & 4)
ENGLISH OR METRIC DRAWINGS

REV.	CHK'D	BY	DATE	REMARKS
4		L.H.	9/09/05	ATTACHED PANEL TO POST #3, CHANGED TUBE SLEEVE, ADDED NOTE
3		L.H.	5/22/02	ADDED VIEW K-K, AND NOTE
2		BT	3-30-01	CHANGED 3/4 HEX NUT PN No
1		BT	9-28-00	ADDED NOTE

- NOTES:
- DO NOT ATTACH GUARDRAIL TO POST # 1.
 - THE 5/8" FLAT WASHER IS USED UNDER THE NUT, BEHIND THE POST ONLY. NO WASHER IS USED AT THE RAIL.
 - MANUFACTURER SUGGESTS CUSTOMER TO PROVIDE REFLECTORIZATION OF TERMINAL.

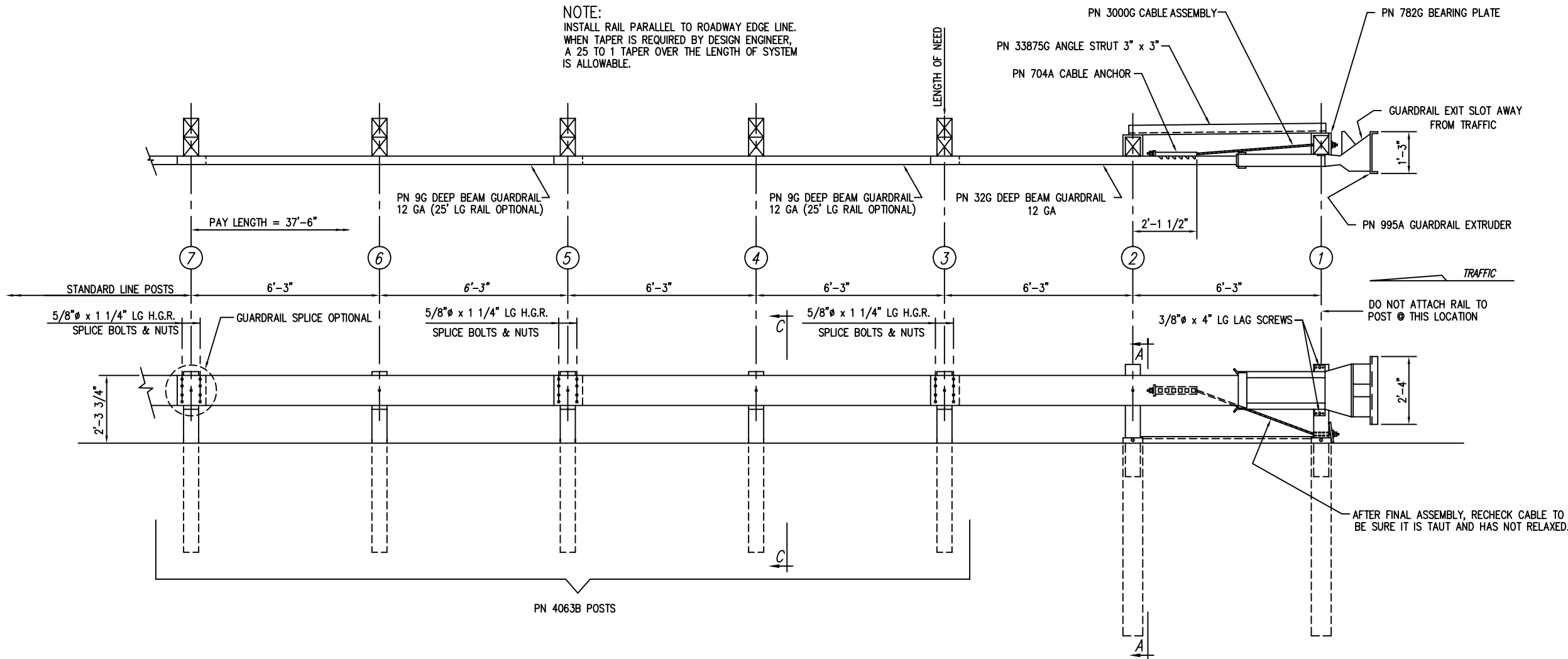
This drawing and the information shown thereon is the sole property of TRINITY H.S.P., INC. Neither the drawing nor such information is to be used for any purpose other than that for which it was specifically furnished by TRINITY H.S.P., INC., nor is any reproduction authorized without written permission.

ET-PLUS
PLAN, ELEVATION & SECTION
NCHRP 350 TEST LEVEL 2
AVAILABLE OPTIONS

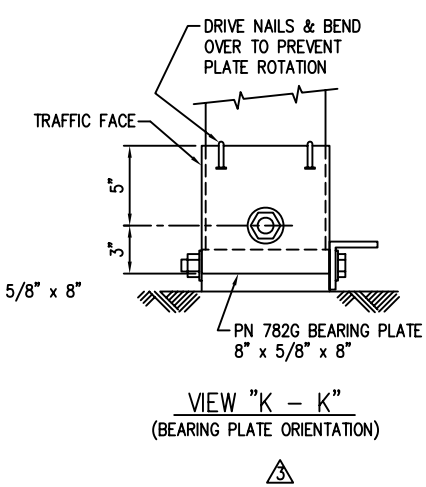
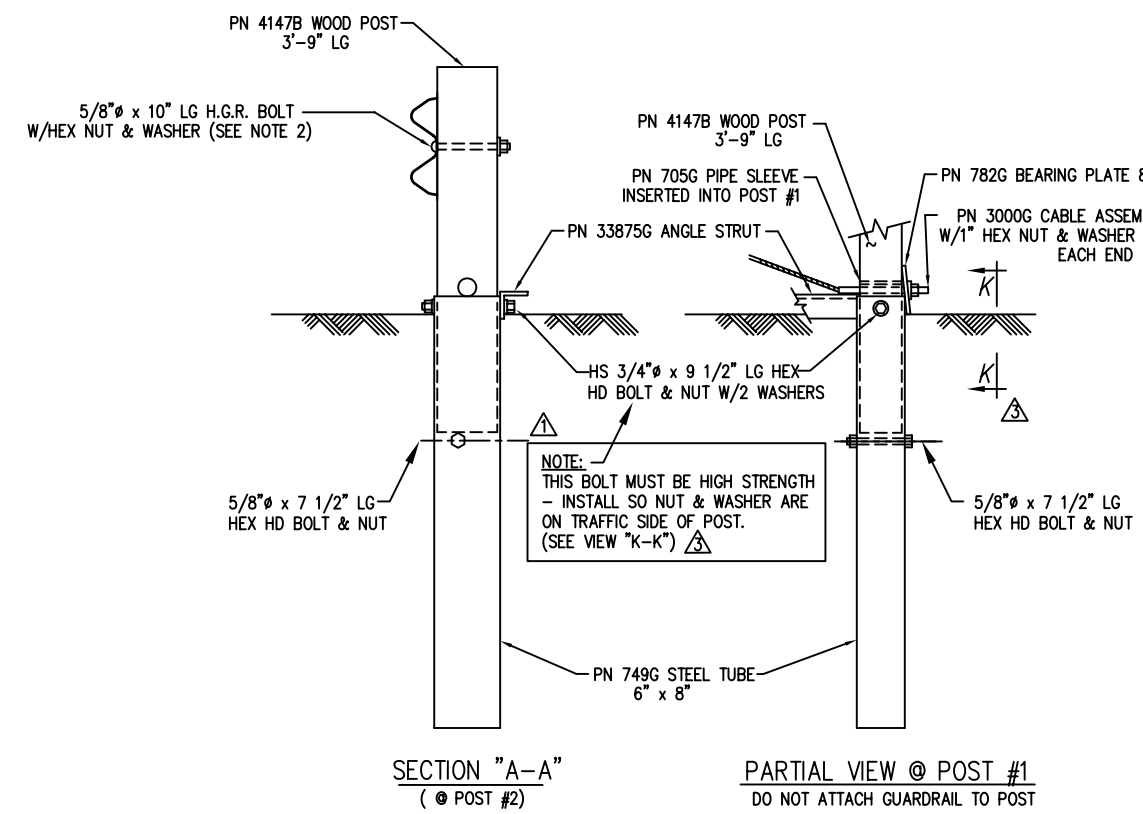
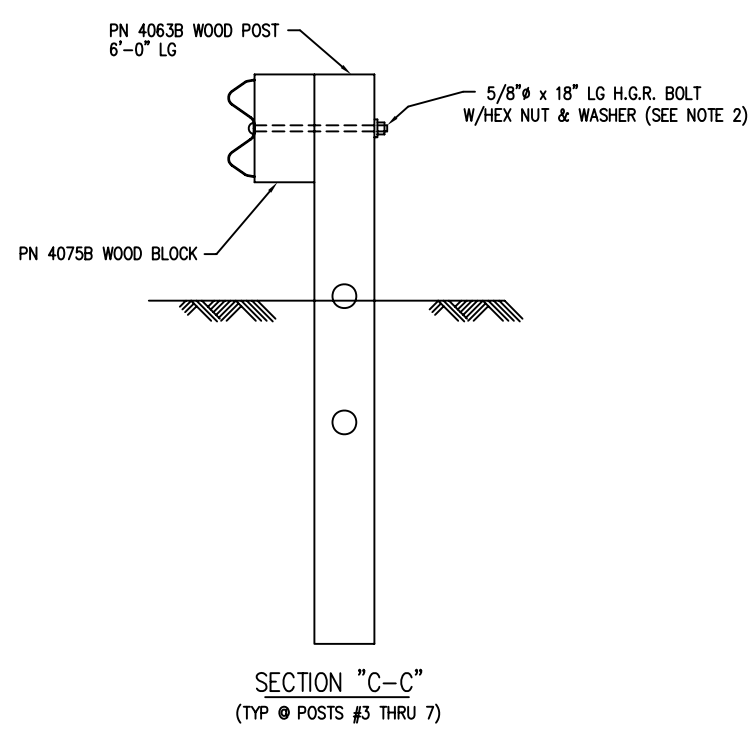
DRAWN	BT
CHECKED	
SCALE	N.T.S.
DATE	5-1-00
ENG. FILE #	SS151-01E
SHT.No.	E1 OF 1
DRAWING NO.	SS-151
REV.	4

TRINITY HIGHWAY SAFETY PRODUCTS, INC.
2525 STEMMONS FREEWAY
DALLAS, TX 75207

NOTE:
INSTALL RAIL PARALLEL TO ROADWAY EDGE LINE.
WHEN TAPER IS REQUIRED BY DESIGN ENGINEER,
A 25 TO 1 TAPER OVER THE LENGTH OF SYSTEM IS ALLOWABLE.



BILL OF MATERIAL		
PN	QTY	DESCRIPTION
9G	2	12/12'6/6'3/S (GUARDRAIL)
32G	1	12/12'6/6'3/S ANC (GUARDRAIL)
704A	1	CABLE ANCHOR BRACKET
705G	1	2" x 5 1/2" PIPE
749G	2	6'0 TUBE SLEEVE
782G	1	5/8" x 8" x 8" BEARING PLATE
995A	1	ET-PLUS EXTRUDER
3000G	1	CABLE 3/4 x 6'6
3300G	6	5/8" WASHER
3340G	32	5/8" HEX NUT
3360G	24	5/8" x 1 1/4" SPLICE BOLT
3478G	2	5/8" x 7 1/2" HEX HD BOLT
3500G	1	5/8" x 10" POST BOLT
3580G	5	5/8" x 18" POST BOLT
3700G	4	3/4" WASHER
3704G	2	3/4" HEX NUT
3900G	2	1" WASHER
3910G	2	1" HEX NUT
4063B	5	WD 6'0 POST 6 x 8
4075B	5	WD BLOCK 1'2 x 6 x 8 DR
4147B	2	WD 3'9 POST 5 1/2 x 7 1/2
4228G	2	3/8" x 4" LAG SCREW
5148G	2	3/4" x 9 1/2" HEX HD BOLT
33875G	1	ANGLE STRUT



- NOTES:
- DO NOT ATTACH GUARDRAIL TO POST # 1.
 - THE 5/8" FLAT WASHER IS USED UNDER THE NUT, BEHIND THE POST ONLY. NO WASHER IS USED AT THE RAIL.
 - MANUFACTURER SUGGESTS CUSTOMER TO PROVIDE REFLECTORIZATION OF TERMINAL.

This drawing and the information shown thereon is the sole property of TRINITY H.S.P., INC. Neither the drawing nor such information is to be used for any purpose other than that for which it was specifically furnished by TRINITY H.S.P., INC., nor is any reproduction authorized without written permission.

- ET-PLUS, OTHER AVAILABLE OPTIONS:
- STEEL HINGED BREAKAWAY (HBA) OR STEEL YIELDING POSTS (SYTP) POSTS AT LOCATIONS 1-2, 1-4, OR 1-7
 - KING BLOCKS (COMPOSITE)
 - 37'-6" OR 50'-0" SYSTEM LENGTH
 - 12'-6" OR 25'-0" GUARDRAIL PANELS
 - 6'-0" POST FOUNDATION TUBES WITHOUT SOIL PLATES OR 4'-6" TUBES W/SOIL PLATES (#1 & 2)
 - 2, 4 OR 7 POST FOUNDATION TUBES (SOIL PLATE OPTIONAL ON POSTS #3-7)
 - ENGLISH OR METRIC DRAWINGS

REV.	CHK'D	BY	DATE	REMARKS
4	L.H.	9/09/05		ATTACHED G-RAIL TO POSTS # 3, 5, 7; CHANGED TAPER NOTE; REVISED TUBE SLEEVES
3	L.H.	5/22/02		ADDED VIEW K-K & NOTE
2	BT	3-30-01		CHANGED 3/4" HEX NUT PN No
1	BT	9-28-00		ADDED NOTE

ET-PLUS

ET-PLUS
PLAN, ELEVATION & SECTION
(AVAILABLE OPTIONS)

TRINITY HIGHWAY SAFETY PRODUCTS, INC.
2525 STEMMONS FREEWAY
DALLAS, TX 75207

DRAWN	B.T.
CHECKED	D.D.
SCALE	N.T.S.
DATE	5/2/00
ENG. FILE #	SS152-01E
SHT.No.	E1 OF 1
DRAWING NO.	SS-152
REV.	4